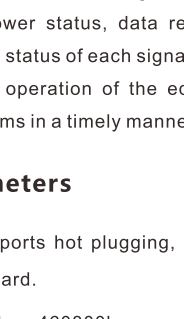


IOT5090(FT) USB to RS232 Ten-light Serial Cable



Open the browser and scan the
QR code to download the product driver.

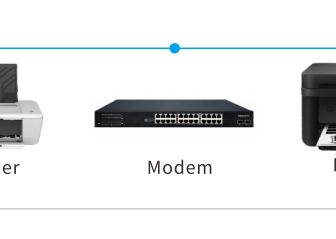
I. Product overview

This product is a high-performance USB to RS232 ten-light serial port conversion cable, designed to meet the communication needs between modern computers and traditional RS232 devices. It uses a high-performance conversion chip that can stably and efficiently convert the USB interface signal into RS232 signal to achieve seamless data transmission. The product has ten signal indicator lights that can intuitively display the power status, data reception and transmission direction, and the working status of each signal line, making it convenient for users to monitor the operation of the equipment in real time and discover and solve problems in a timely manner.

II. Function parameters

1. USB2.0 standard, supports hot plugging, plug and play; compatible with EIA/TIA RS232 standard.
2. Support baud rate: 300bps-460800bps.
3. The product has ten signal status indicators to display the power status, data transmission and reception, transmission direction and the working status of each signal line, which is very convenient for engineers to check the communication status of each signal during debugging.
4. Support MODEM contact signal, DCD, RXD, TXD, DTR, GND, DSR, RTS, CTS, RI.
5. Electrostatic ESD protection: ±15KV IEC1000-4-2 air gap discharge. ±10KV IEC1000-4-2 contact discharge.
6. Support WinXP, Win7, Win10, Win11, Linux, Mac and other systems.
7. Adaptable temperature: -20°C ~ 85°C, humidity: 5% ~ 95%.
8. Wire material: braided mesh + aluminum foil. Double-layer shielding has strong anti-interference ability, and the twisted pair USB data cable has more stable signal transmission.

III. Interface description

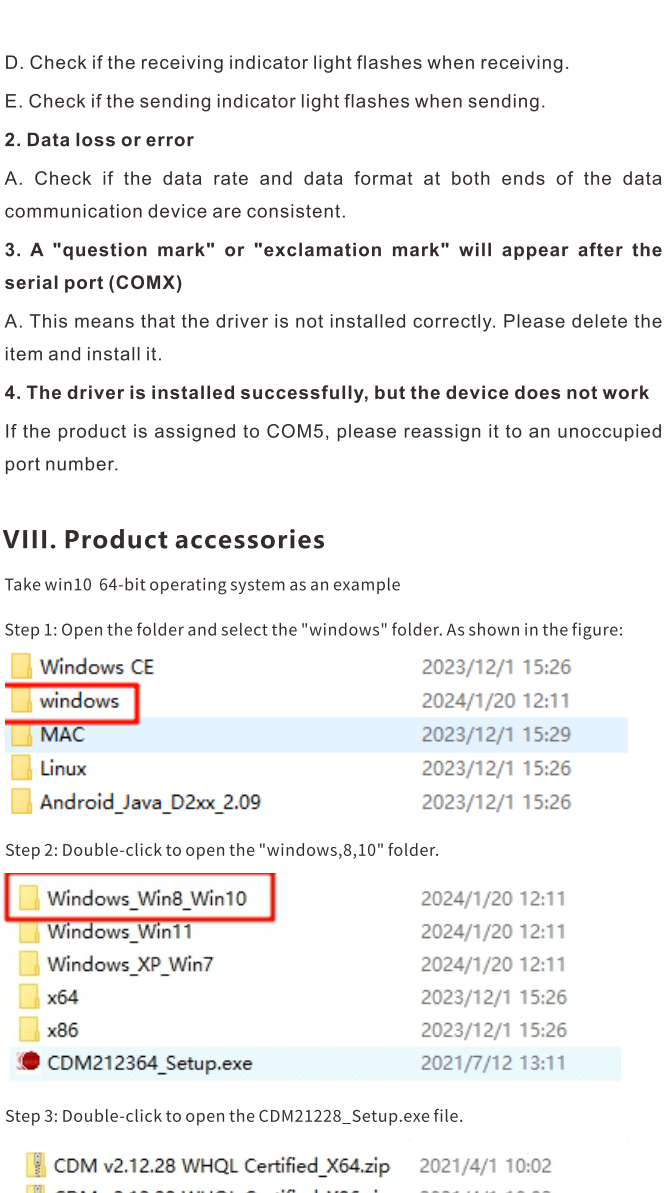


DB9 male connector definition

DB9 needle	Output signal	Signal description
1	DCD	Carrier detection
2	RXD	Receive data from external devices
3	TXD	Send computer data to external devices
4	DTR	The data terminal is ready. When this pin is high, it notifies the modem that data transmission is possible.
5	GND	Signal ground, used for grounding
6	DSR	Data device is ready. When this pin is high, it notifies the computer that the modem is ready for data communication.

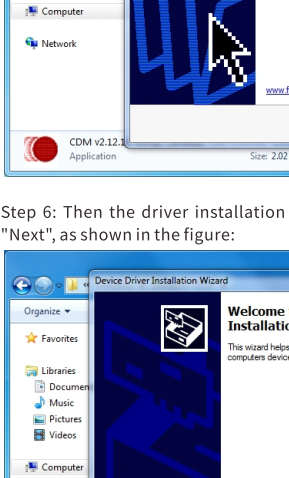
7	RTS	Request to send, controlled by the computer, to notify the modem to immediately send data to the computer
8	CTS	Clear to send, controlled by the modem, to notify the computer to send the data to the modem
9	RI	Ringing reminder, modem notification The computer has an incoming call

IV. Product connection diagram



V. Product usage scenarios

In industrial production lines, various automation equipment such as PLC (Programmable Logic Controller), inverter, sensor, etc. are usually equipped with serial ports. Technicians can easily connect the equipment to the computer using a driver-free serial port cable to set parameters, download programs, and monitor the running status of the equipment in real time without worrying about the debugging progress being affected by driver installation problems.



VI. Product accessories

1. Product *1

VII. Product accessories

1. Data communication failed

- A. Check whether the USB interface wiring is correct.
- B. Check whether the RS232 interface wiring is correct.
- C. Check whether the USB power supply is normal.

2. Data loss or error

- A. Check if the data rate and data format at both ends of the data communication device are consistent.

3. A "question mark" or "exclamation mark" will appear after the serial port (COMX)

- A. This means that the driver is not installed correctly. Please delete the item and install it.

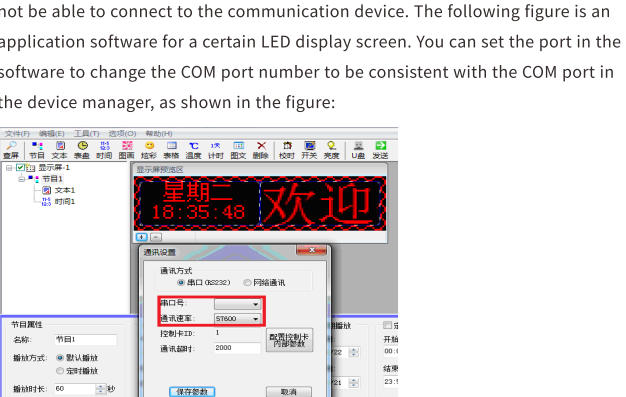
4. The driver is installed successfully, but the device does not work

If the product is assigned to COM5, please reassign it to an unoccupied port number.

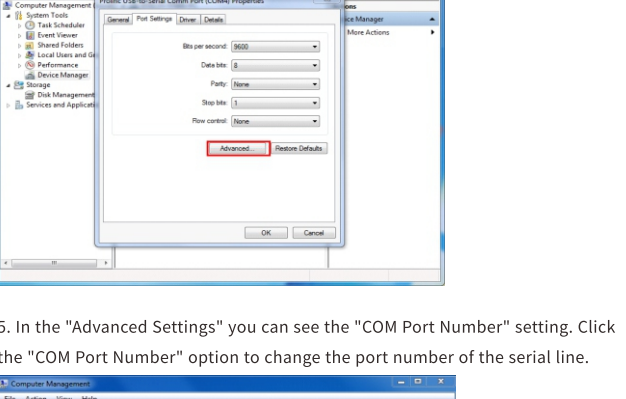
VIII. Product accessories

Take win10 64-bit operating system as an example

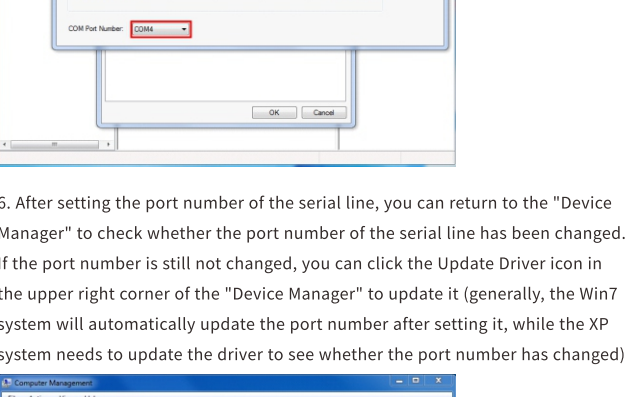
Step 1: Open the folder and select the "windows" folder. As shown in the figure:



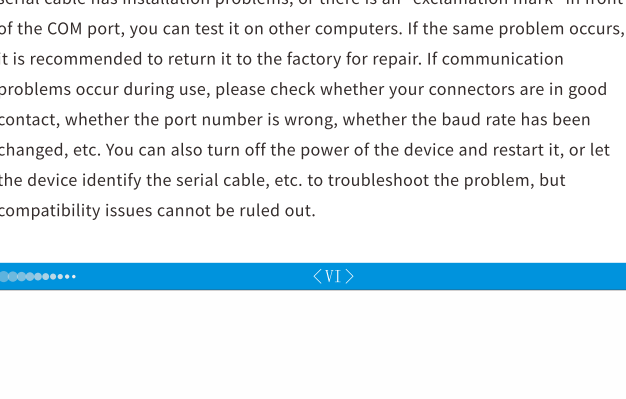
Step 2: Double-click to open the "windows,8,10" folder.



Step 3: Double-click to open the CDM21228_Setup.exe file.



Step 4: Open the pop-up installation program, double-click "Application", as shown in the figure:



Step 5: The chip company name information pops up, click "Extract" as shown in the figure:



Step 6: Then the driver installation wizard prompt window will pop up, click "Next", as shown in the figure:

Step 7: Select "I accept this agreement" and click "Next", as shown in the figure:

Step 8: Then a window pops up indicating that the driver has been installed. Click "Finish", as shown in the figure:

IX. Device Manager Port Issues

1. Right-click "Computer" and select "Manage", as shown in the figure:

2. If the driver cannot be found in the "Device Manager" after inserting the serial cable, but it displays "Unknown Device", then change another USB port on the computer to test. If this problem still occurs, the serial cable may be faulty. It is recommended to return it to the factory for replacement.

3. When you see the device manager recognize the COM port number, you may not be able to connect to the communication device. The following figure is an application software for a certain LED display screen. You can set the port in the software to change the COM port number to be consistent with the COM port in the device manager, as shown in the figure:

4. If the user needs to change the serial port, click "Advanced Settings" in "Port Settings", as shown in the figure:

5. In the "Advanced Settings" you can see the "COM Port Number" setting. Click the "COM Port Number" option to change the port number of the serial line.

6. After setting the port number of the serial line, you can return to the "Device Manager" to check whether the port number of the serial line has been changed. If the port number is still not changed, you can click the Update Driver icon in the upper right corner of the "Device Manager" to update it (generally, the Win7 system will automatically update the port number after setting it, while the XP system needs to update the driver to see whether the port number has changed).

7. So far, the installation and use of the serial cable have been introduced. If the serial cable has installation problems, or there is an "exclamation mark" in front of the COM port, you can test it on other computers. If the same problem occurs, it is recommended to return it to the factory for repair. If communication problems occur during use, please check whether your connectors are in good contact, whether the port number is wrong, whether the baud rate has been changed, etc. You can also turn off the power of the device and restart it, or let the device identify the serial cable, etc. to troubleshoot the problem, but compatibility issues cannot be ruled out.

Product Warranty Card

Customer Information

Model:	
Date of purchase:	
User telephone:	
User address:	
Distributor:	
Agency address:	
User telephone:	Dealer stamp valid

Intenance Records

Repair times	Date	Fault	Treatment measures	Repair work NO.

Electronic products are guaranteed for one year, and other products are guaranteed for two years. Damage caused by human factors or product burnout caused by improper operation is not included in the scope of warranty.